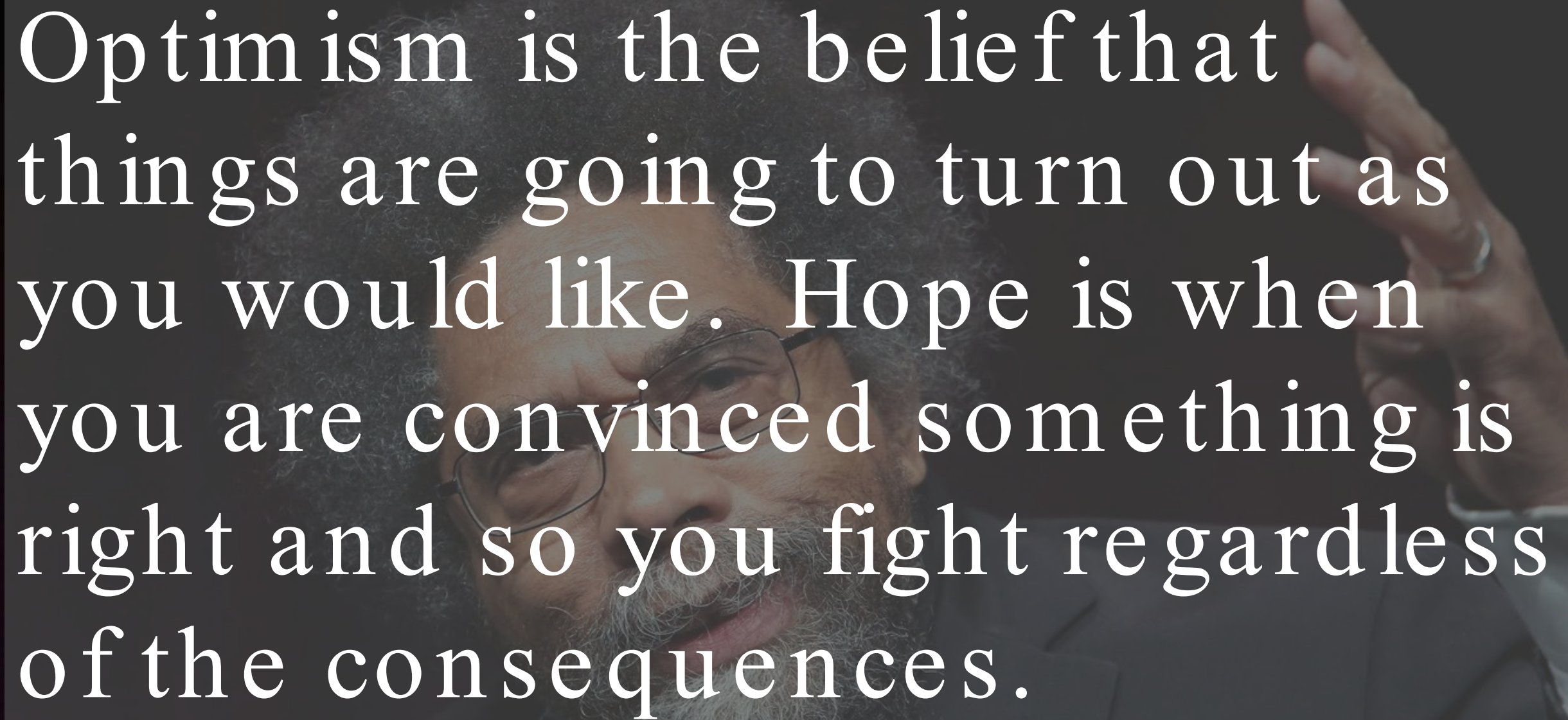


The Tide Is Rising And So are We

Choosing Hope
in Hard Times

Julie Wormser
Mystic River
WATERSHED ASSOCIATION



A man with a grey beard and glasses is speaking, looking slightly to the right. In the background, a hand is raised with fingers spread. The image is dark and serves as a background for the text.

Optimism is the belief that things are going to turn out as you would like. Hope is when you are convinced something is right and so you fight regardless of the consequences.

**So, climate
change.**





21 communities. One watershed.

We partner on climate challenges no
single municipality can solve alone

[Learn More](#)

Credit: Chris McIntosh



Malden

Medford

Somerville

Everett

1938 USGS

Credit: MapJunction.com

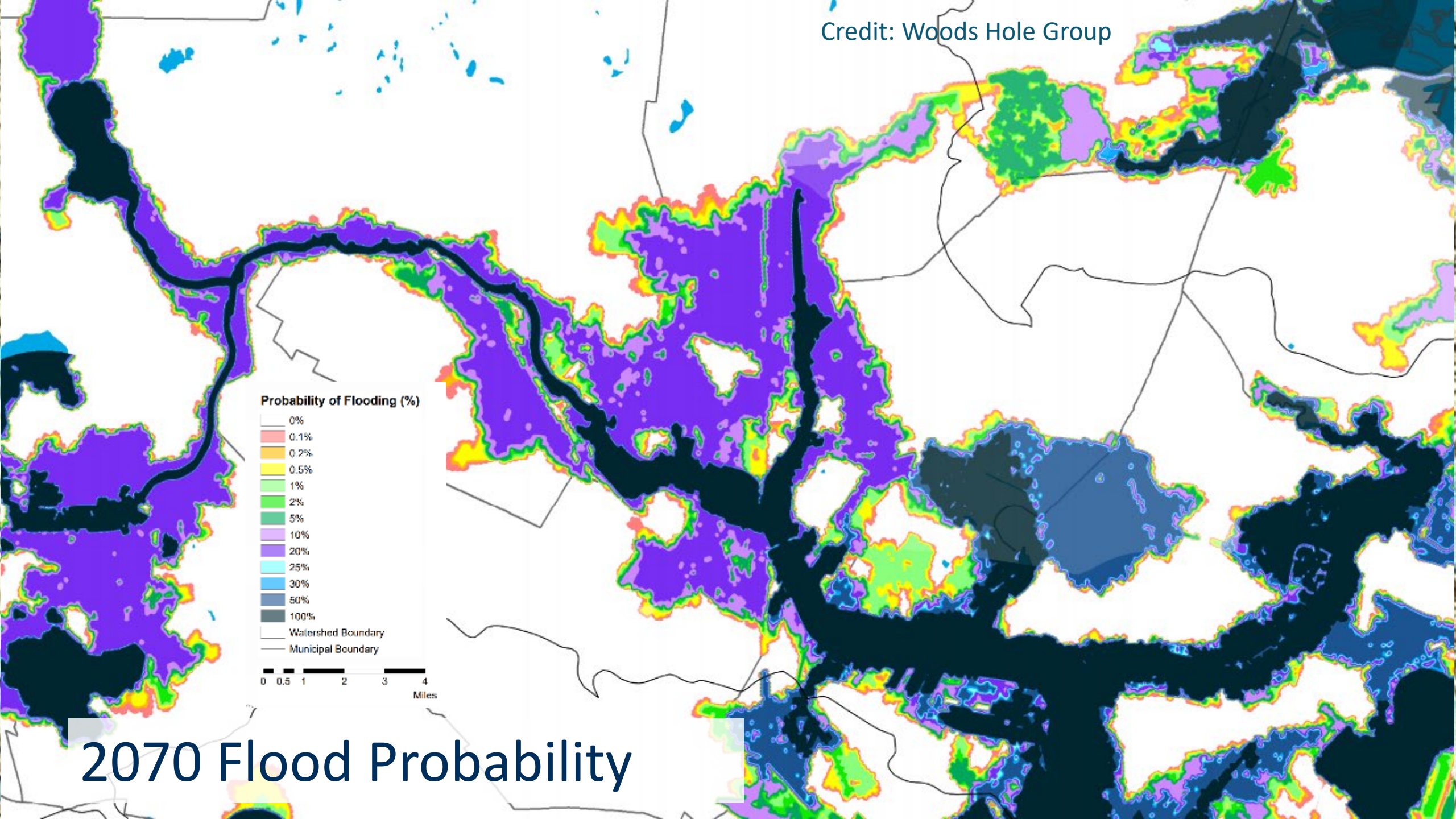
Credit: Woods Hole Group

Probability of Flooding (%)

- 0%
- 0.1%
- 0.2%
- 0.5%
- 1%
- 2%
- 5%
- 10%
- 20%
- 25%
- 30%
- 50%
- 100%
- Watershed Boundary
- Municipal Boundary



2070 Flood Probability

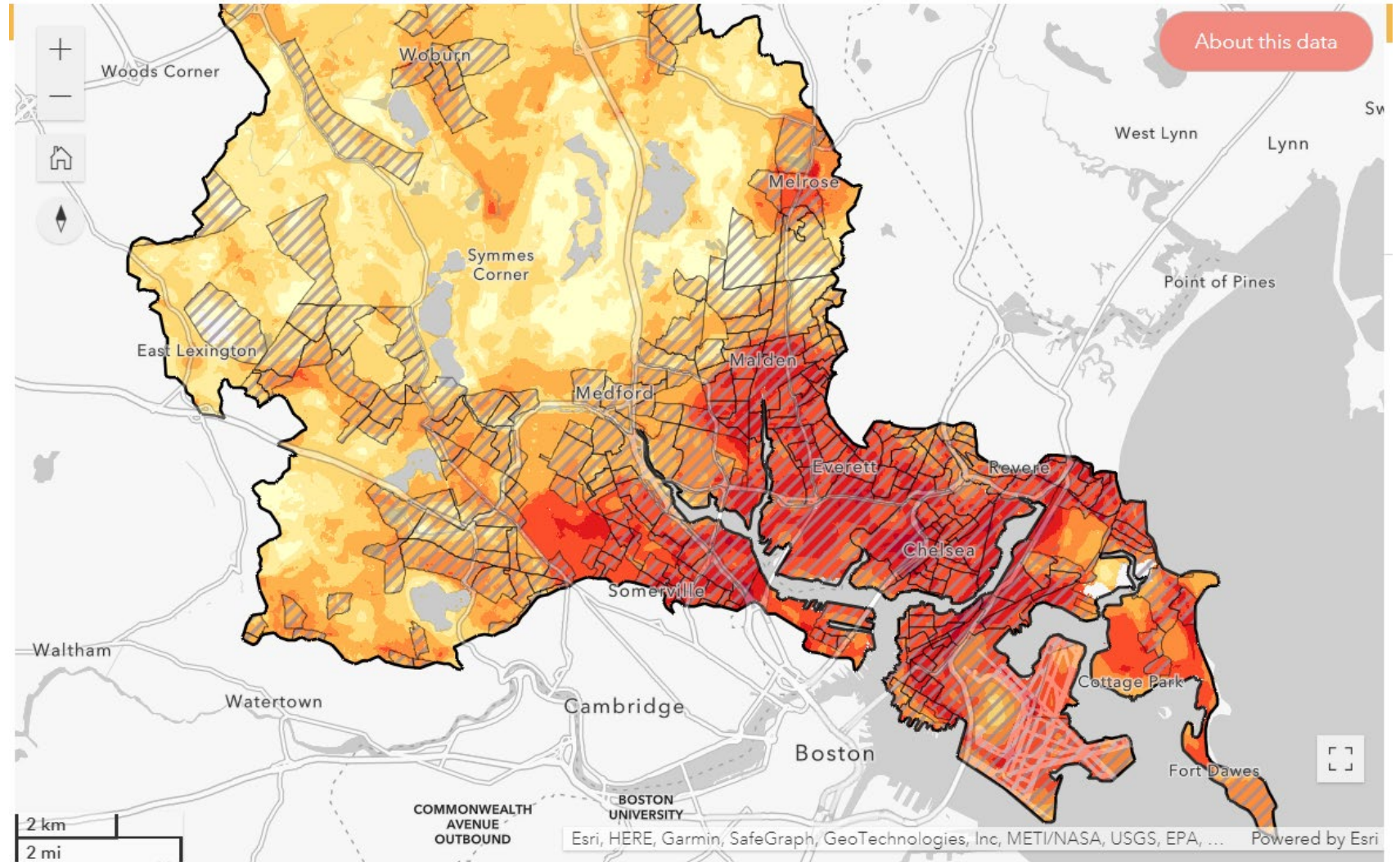




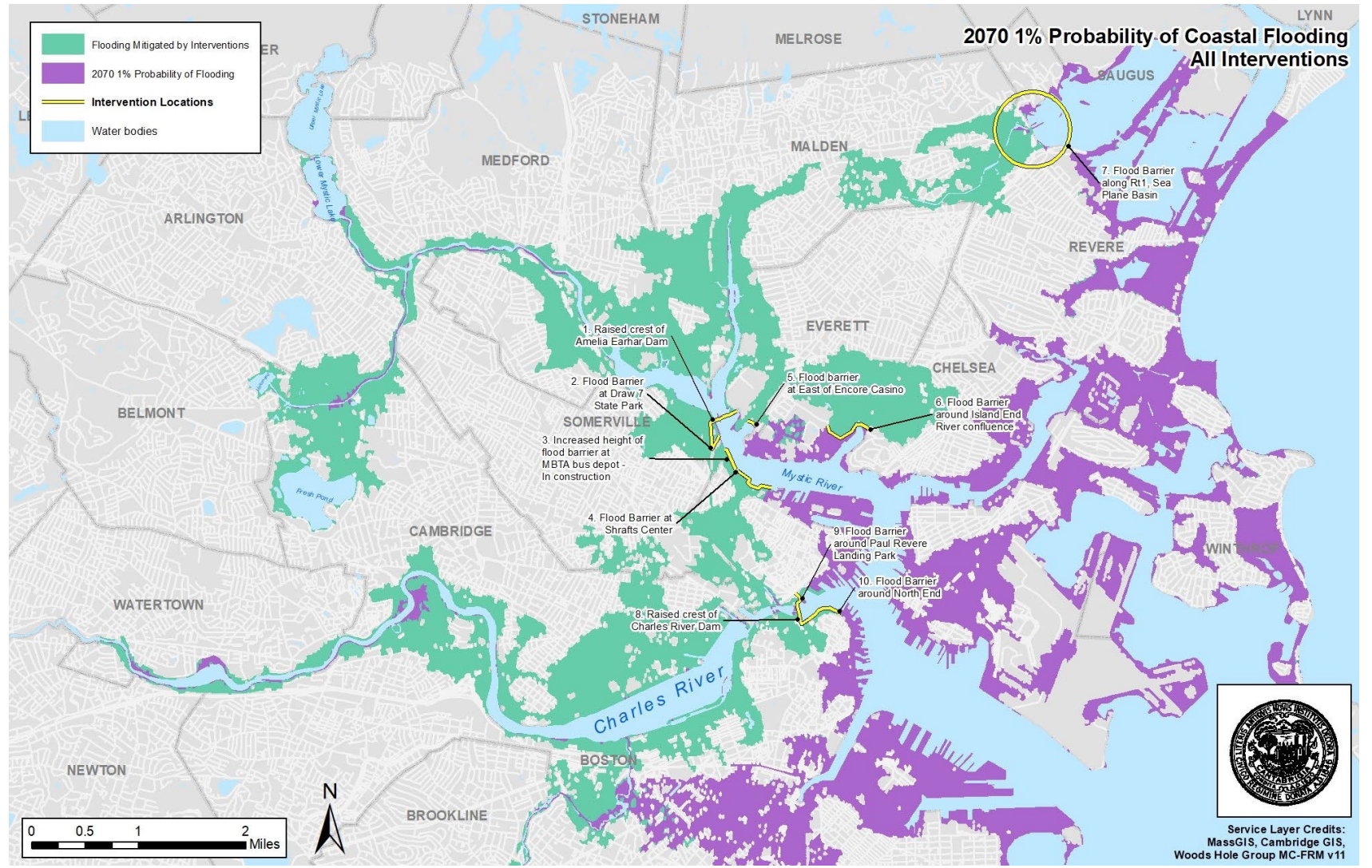
Regional Stormwater Management



Wicked Hot Mystic



Coastal Flood Management

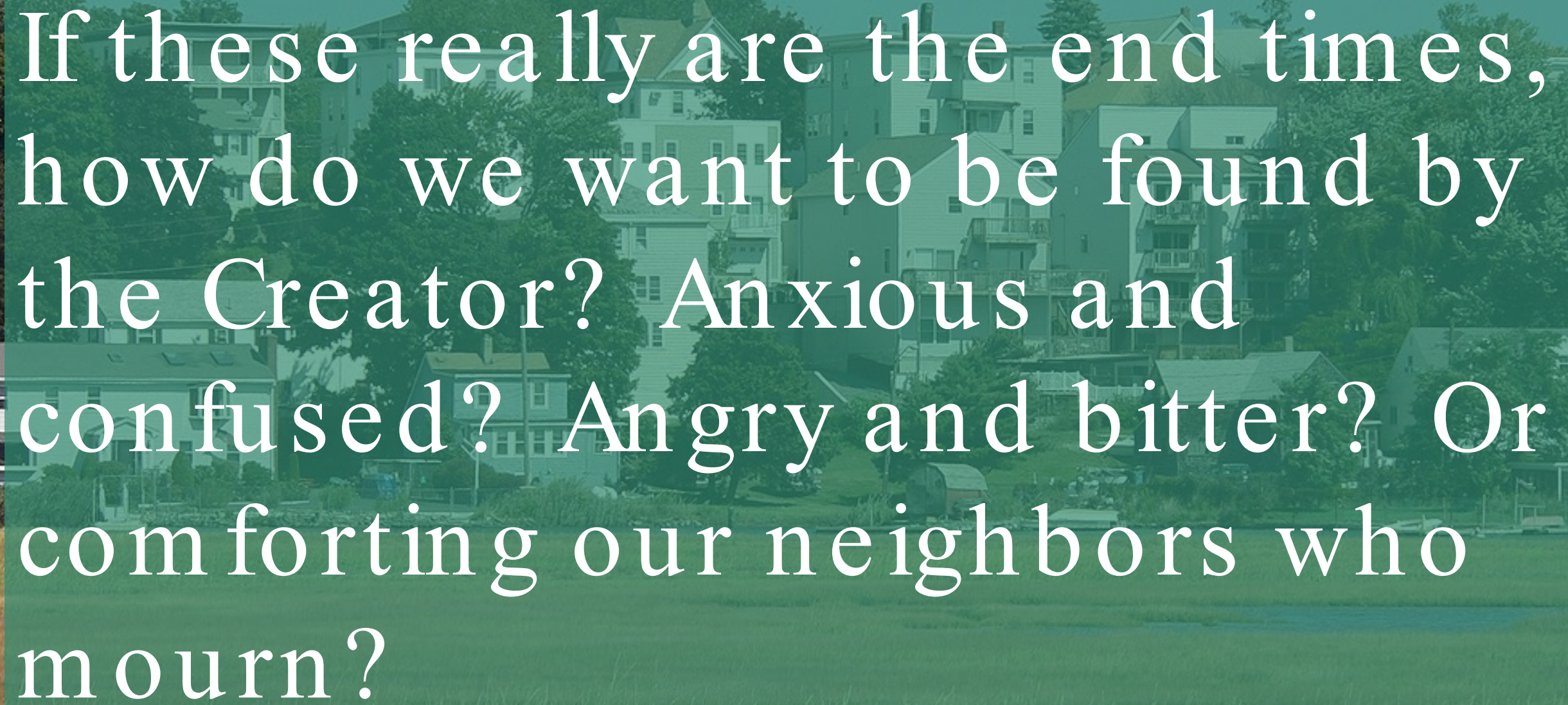




Encore

THANK YOU!





If these really are the end times,
how do we want to be found by
the Creator? Anxious and
confused? Angry and bitter? Or
comforting our neighbors who
mourn?



SHIRLEY
ANNE

1945 - 2006